

Test Report

Report No. RLSZC000494310002

Page 1 of 4

Applicant CHENGDU KANGLONGXIN PLASTICS CO.,LTD

Address RM.2, 10TH FLOOR,FLAT C,SHOU ZUO BLDG., NO., NO.48, SECTION 4, RENMIN
NAN ROAD, CHENGDU, 610041, CHINA

Report on the submitted sample(s) said to be

Sample Name PC Film

Sample Description Black plastic sheet

Part No. KLX FRPC-870B,KLX FRPC-870BF,KLX FRPC-870BH,KLX
FRPC-870BFH,KLX FRPC-83B,KLX FRPC-83,KLX FRPC-F70,KLX
FRPC-700B,KLX FRPC-700BF,KLX FRPC-60,KLX FRPC-60H,KLX
FRPC-63,KLX FRPC-63H,KLX FRPC-65,KLX FRPC-65H

Sample Received Date Mar. 29, 2010

Testing Period Mar. 29, 2010 to Mar. 30, 2010

Test Requested As specified by client, to determine the Lead(Pb), Cadmium(Cd),
Mercury(Hg), Hexavalent Chromium(Cr(VI)), Polybrominated
Biphenyls(PBBs), Polybrominated Diphenyl Ethers(PBDEs) content in the
submitted sample.

Test Method

Test Item(s)	Test Method	Measured Equipment(s)	MDL
Lead(Pb)	IEC 62321:2008 Ed.1 Sec.8	ICP-OES	2 mg/kg
Cadmium(Cd)	IEC 62321:2008 Ed.1 Sec.8	ICP-OES	2 mg/kg
Mercury(Hg)	IEC 62321:2008 Ed.1 Sec.7	ICP-OES	2 mg/kg
Hexavalent Chromium(Cr(VI))	IEC 62321:2008 Ed.1 Annex C	UV-Vis	2 mg/kg
Polybrominated Biphenyls(PBBs)	IEC 62321:2008 Ed.1 Annex A	GC-MS	5 mg/kg
Polybrominated Diphenyl Ethers(PBDEs)	IEC 62321:2008 Ed.1 Annex A	GC-MS	5 mg/kg

Test Result(s) Please refer to the following page(s).

Tested by



Technical Manager

Inspected by



Approved by

Date

Mar. 30, 2010

No. 11362869

Test Report

Report No. RLSZC000494310002

Page 2 of 4

Test Result(s)

Tested Item(s)	Content
Lead(Pb)	N.D.
Cadmium (Cd)	N.D.
Mercury(Hg)	N.D.
Hexavalent Chromium(Cr(VI))	N.D.

Tested Item(s)	Content
Polybrominated Biphenyls(PBBs)	
Monobromobiphenyl	N.D.
Dibromobiphenyl	N.D.
Tribromobiphenyl	N.D.
Tetrabromobiphenyl	N.D.
Pentabromobiphenyl	N.D.
Hexabromobiphenyl	N.D.
Heptabromobiphenyl	N.D.
Octabromobiphenyl	N.D.
Nonabromobiphenyl	N.D.
Decabromobiphenyl	N.D.

Tested Item(s)	Content
Polybrominated Diphenyl Ethers(PBDEs)	
Monobromodiphenyl ether	N.D.
Dibromodiphenyl ether	N.D.
Tribromodiphenyl ether	N.D.
Tetrabromodiphenyl ether	N.D.
Pentabromodiphenyl ether	N.D.
Hexabromodiphenyl ether	N.D.
Heptabromodiphenyl ether	N.D.
Octabromodiphenyl ether	N.D.
Nonabromodiphenyl ether	N.D.
Decabromodiphenyl ether	N.D.

Note: The sample had been dissolved totally tested for Lead, Cadmium, Mercury.

-MDL = Method Detection Limit

-N.D. = Not Detected (<MDL)

-mg/kg = ppm = parts per million

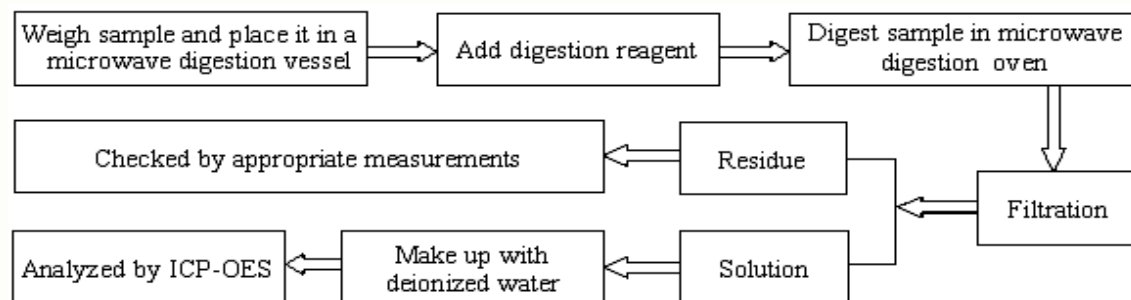
Test Report

Report No. RLSZC000494310002

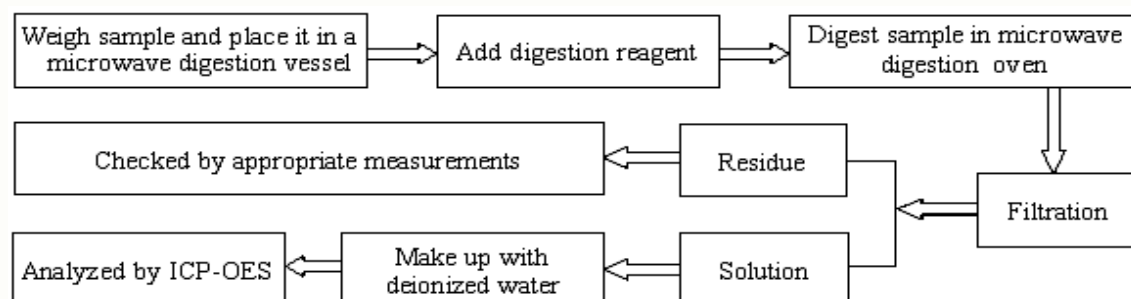
Page 3 of 4

Test Process

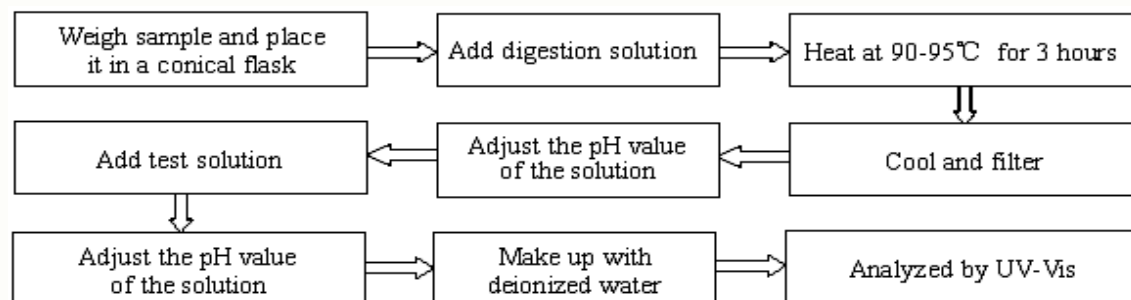
1. Lead(Pb), Cadmium(Cd)



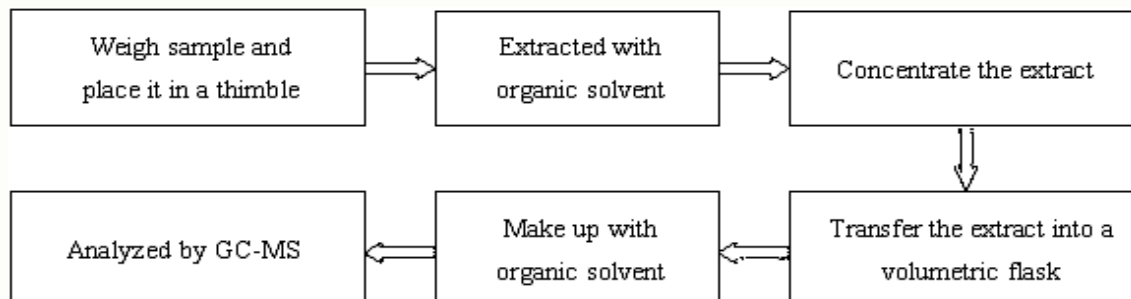
2. Mercury(Hg)



3. Hexavalent Chromium(Cr(VI))



4. Polybrominated Biphenyls(PBBs), Polybrominated Diphenyl Ethers(PBDEs)

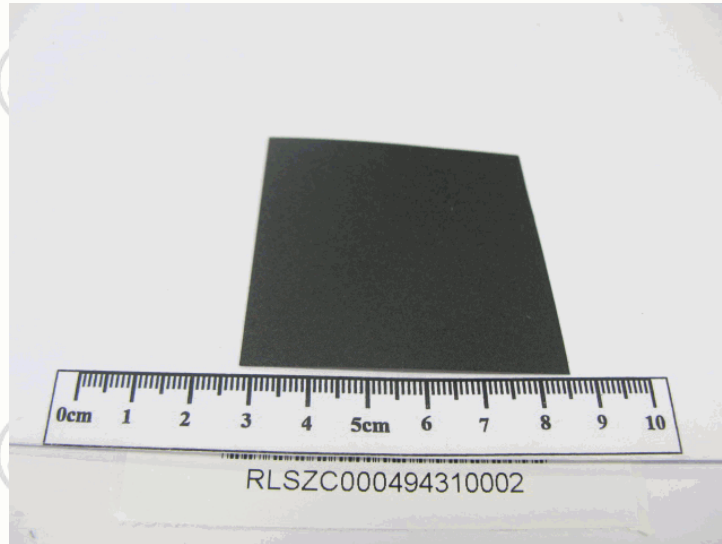


Test Report

Report No. RLSZC000494310002

Page 4 of 4

Photo(s) of the sample(s)



*** End of report ***

This report is considered invalidated without the Special Seal for Inspection of the CTI. This report shall not be altered, increased or deleted. The results shown in this test report refer only to the sample(s) tested. Without written approval of CTI, this test report shall not be copied except in full and published as advertisement.

Building C, Hongwei Industrial Zone, Baoan 70 District, Shenzhen